

# Flushing Rings

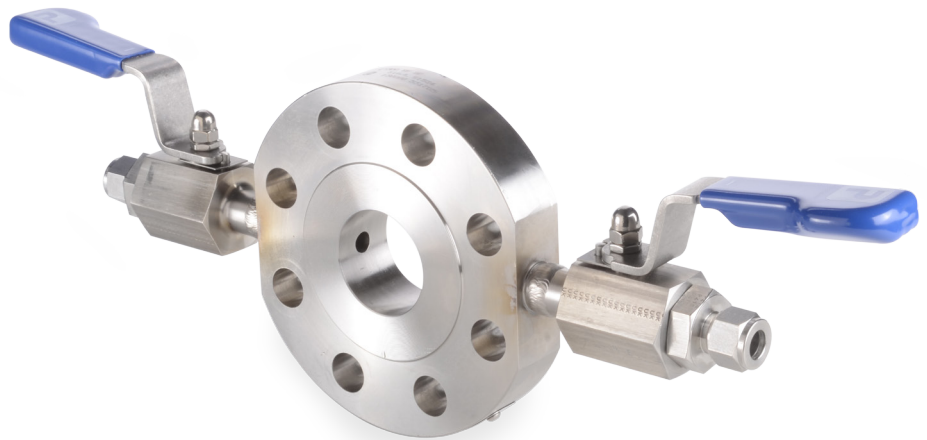
Process to Instrument Valves



## Easy-fit to Parker P to I Valves

Parker offers a bespoke range of flushing rings in number of different styles and configurations. Historically, flushing rings are secured between the two raised faces only and held in position by the force exerted through the bolts.

The Parker solution is held in place by the through bolting, this allows for ease of installation and to positively locate.



## Contact Information:

Parker Hannifin Corporation  
**Instrumentation Products Division, Europe**

Pottington Business Park  
Barnstaple, EX31 1NP

phone 0044 (0)1271 313131

[www.parker.com/ipd](http://www.parker.com/ipd)

## Product Features:

- Integral welded valves, no threads or PTFE required
- Easy to fit with through holes for studding
- Weld extensions gives added clearance away from chemical seal
- Captive stud option
- Choice of flushing valves
- Available in a range of corrosion resistant alloys



ENGINEERING YOUR SUCCESS.

# Process. Controlled

Options with this range of flushing rings include captive studs. This gives the added benefit of the flushing ring staying in place if either the process valve side or diaphragm side require removal. Captive studs give a further benefit of allowing size reduction.

Parker can offer (for example) a 3" flange size on the diaphragm side (which is the typical preferred size) then reduce to the 2" outlet flange of the process valve. The benefit this brings is the saving of having a valve that is unnecessarily too large and too heavy, not to mention the added expense.

Offering bespoke, innovative solutions is in our nature, which is why we have many customer driven designs, examples of which can be seen on this page.

Parker can manufacture with ball valves to allow flushing, needle valves or incorporate a Parker Monoflange. The valves can be either single or double.

We also weld the extensions onto the flushing ring and then locate the valves onto the extensions. This makes the installation simple and reduces installer costs and possibility of error.

## Part Numbering

